

Esko display stand assembly instructions—Stand A

(Instructions for Stand B are on page 6)

Important Note

The stand is intended to be set up against a wall or back-to-back against other stands. **For safety/stability reasons, Esko does NOT recommend using the stand as a free-standing display unless it is set up with two pairs of feet as a two-sided island display.**

Stand A dimensions are 2.4m high x 1.1m wide. Stands can be assembled by one person but it's easier if two people are available. Begin with box A.



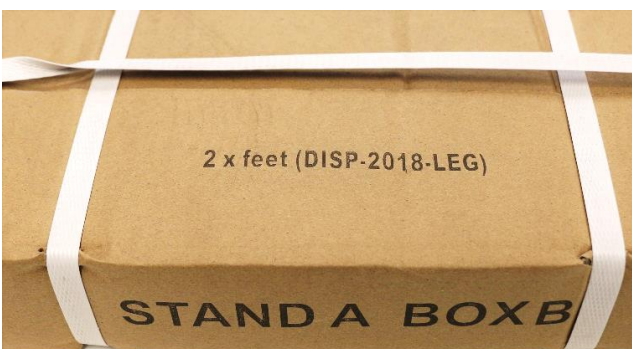
Assemble the two uprights by sliding the top section into the lower. Tap home with a mallet if necessary.



The bottom of the upright is the end with larger slots in it to accept the feet.



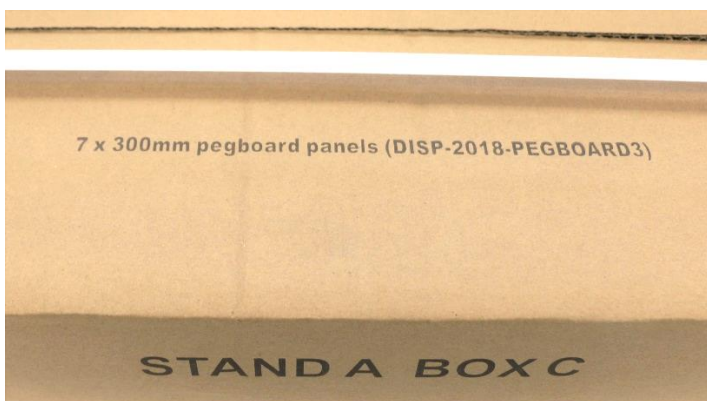
Open Box B and remove the feet. Screw in the height adjusters.



Slot the feet into the bottom of the upright. If necessary, use a mallet or similar to tap the connection home. A second set of feet can fit on the other side of the upright if the stand is being assembled as a two-sided island display.



Open box C, which contains the pegboard backing panels.



Starting from the bottom, drop the pegboard sections into place, slotting them into the inner series of slots in the uprights and tapping down as necessary.

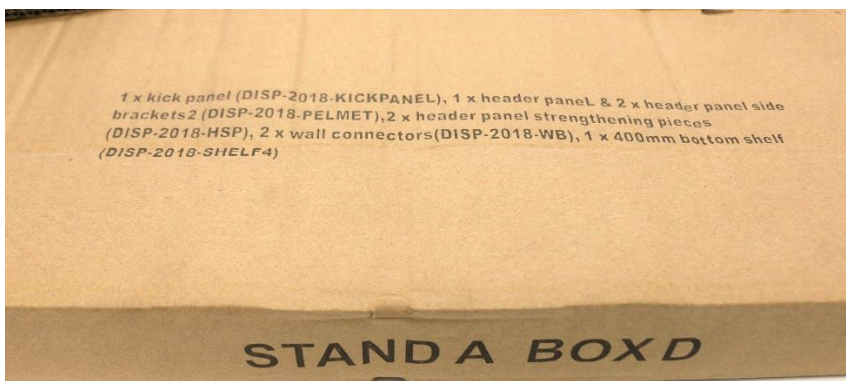


Seven pegboard sections are required to complete the stand from top to bottom. **Take care as the stand may overbalance easily until the shelves are added. It's better to do this part with the stand located close up to a wall.**

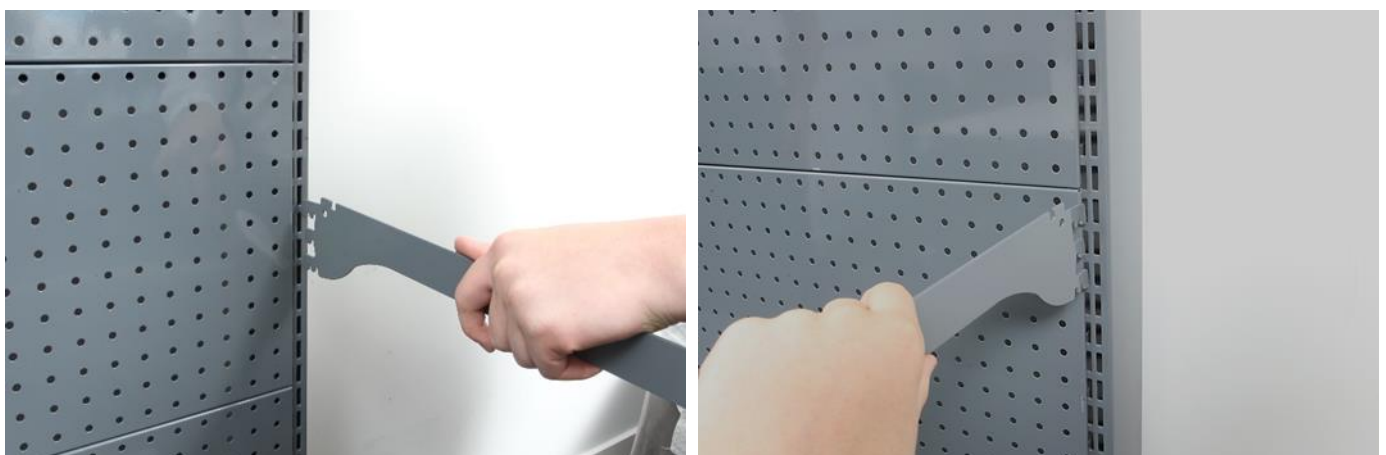
Move the stand to sit in its intended display location. Each unit is supplied with two earthquake securing brackets (one for each upright of the stand) as shown below. These are intended to secure the unit to the wall to prevent it toppling if accidentally pushed or in the event of an earthquake. Where the stand is mounted against a wall, we recommend these brackets are used. Fix them to the wall to locate into the top of the uprights as shown below, using screws or appropriate anchors.



Open box D, which contains all the other items to complete the stand.



Add the shelf brackets at the desired heights (300mm and 400mm shelves have different length brackets), slotting them also into the inner series of slots in the uprights. Drop the shelves into position on the brackets. The bottom shelf does not need any brackets, it sits in the guide on top of the feet.

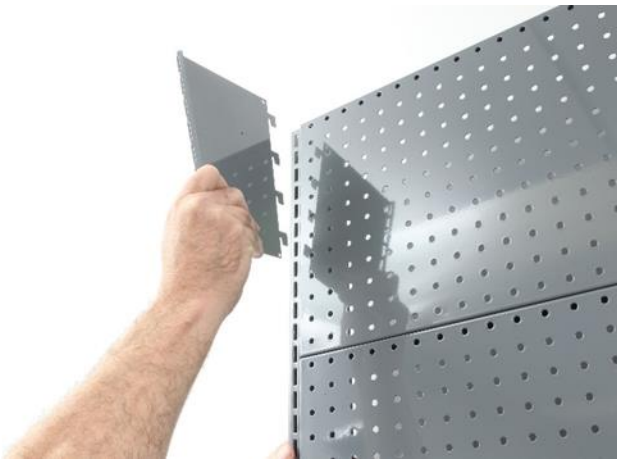




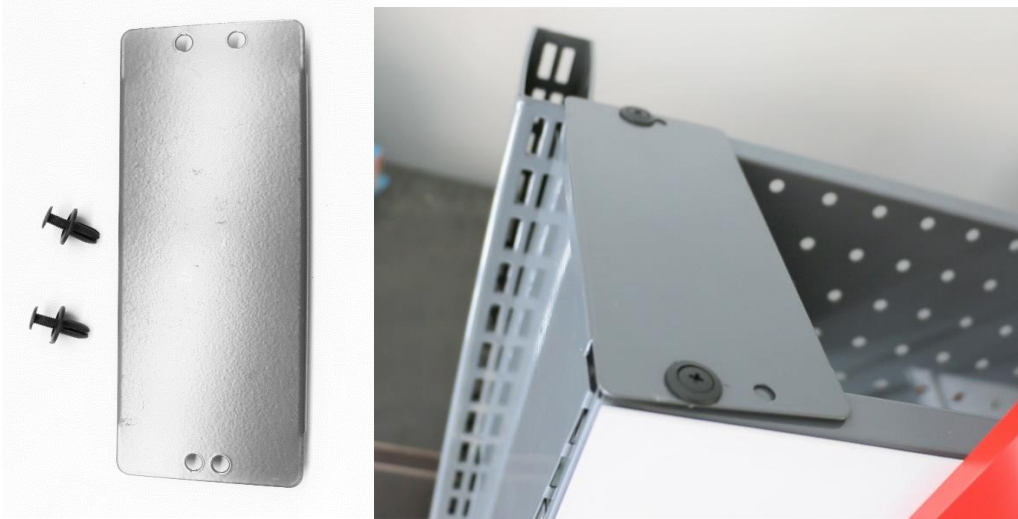
Add the kickplate to the bottom front.



Fit the side supports of the header panel into the inner series of slots in the uprights, so that the top lines up with the top of the upright. Slot the tabs of the header panel into the side supports.



Each stand comes with two header securing plates, shown below. Place these at the sides of the header and secure by pressing in the plastic rivet retainers. Ensure these plates are fitted, they hold the header steady and prevent customers accidentally dislodging it.



Esko display stand assembly instructions—Stand B

Stand B is a lower height stand which can be assembled to a height of either 1.2 or 1.5 metres. Width of this stand is 0.9m, vs 1.1m for Stand A. Instructions to assemble Stand B are the same as for Stand A, with two exceptions:

- The upper section (arrowed) is 0.3m high, not 1.2m as in the full height stand. The stand can be assembled with or without this section depending on the desired height of the stand. If not used, the additional 0.3m high pegboard section is also not required.
- This stand does not have a pelmet type header panel. Instead, the header panel sits in channel sections (circled) that slot to the top of the stand.



Display Accessories

Complete the stand by adding any of the Esko display accessories. Available:

- 150mm prongs with plastic price/label swing tag
- 200mm prongs with plastic price/label swing tag
- Helmet display mount
- Basket shelf (280 x 280mm)
- Cone bar basket (holds up to seven cone bars)
- Half shelf (300 x 500mm)
- Lockable eyewear display bar



150mm prongs in use



Prongs with plastic price/label swing tag



Half shelf fitted on support bar



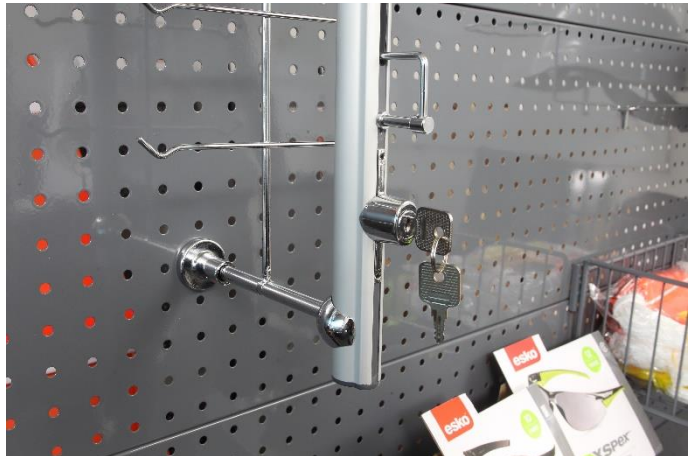
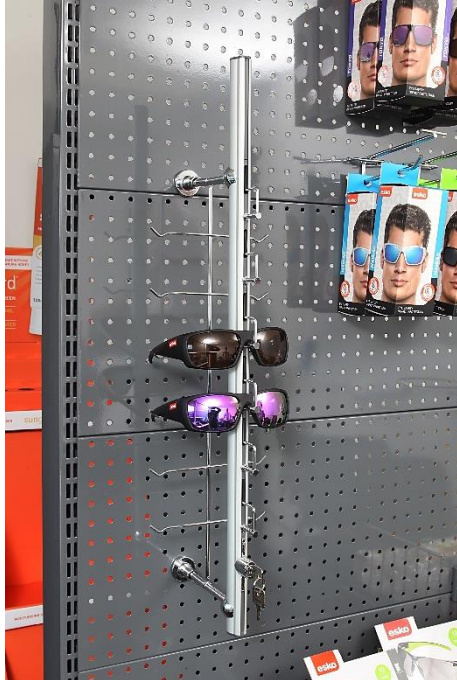
Basket shelf



Cone bar basket (RH picture shows bolting on the support tabs)



Helmet display prongs



Lockable eyewear display bar